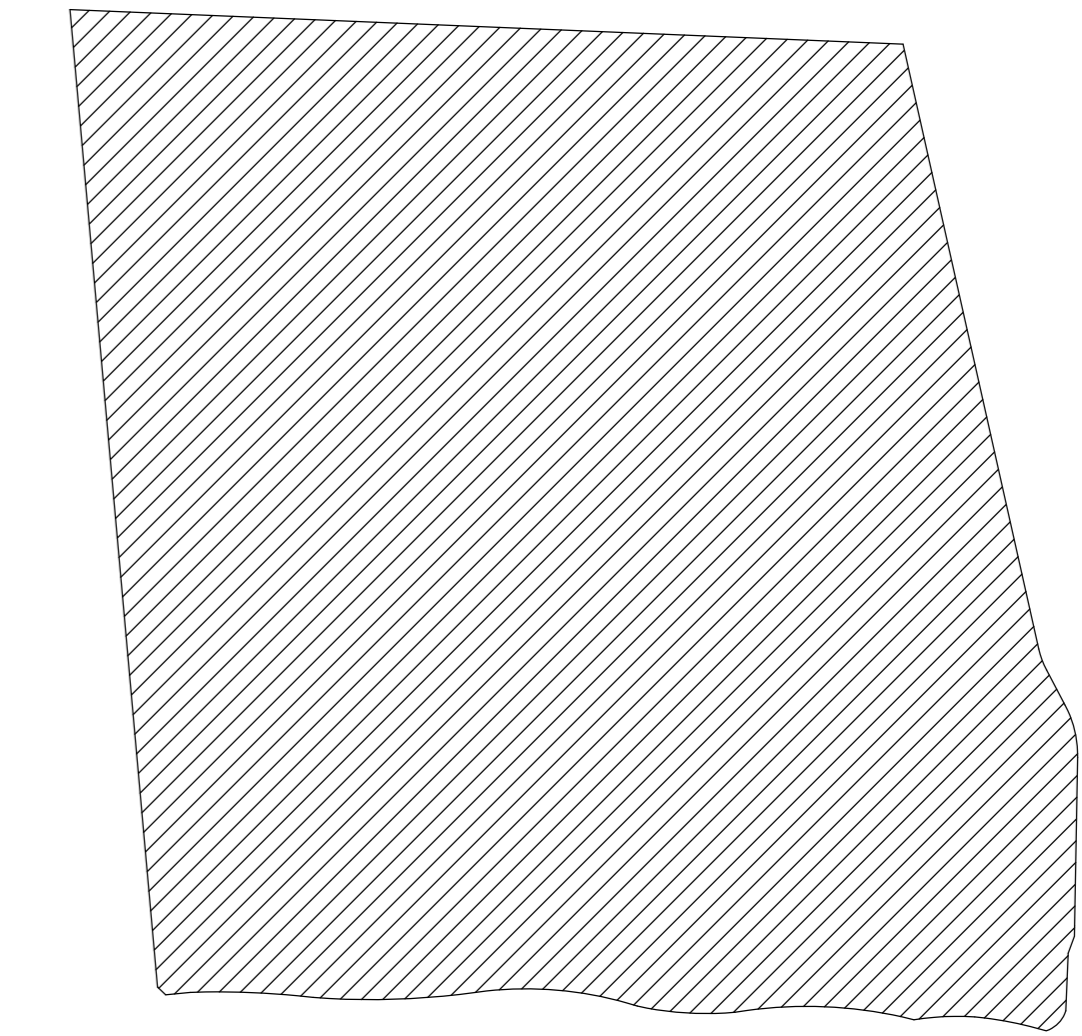
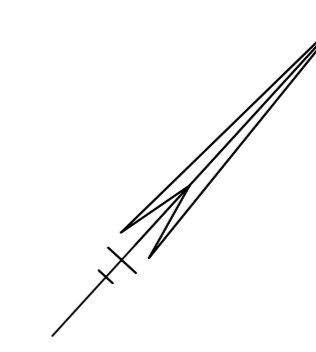
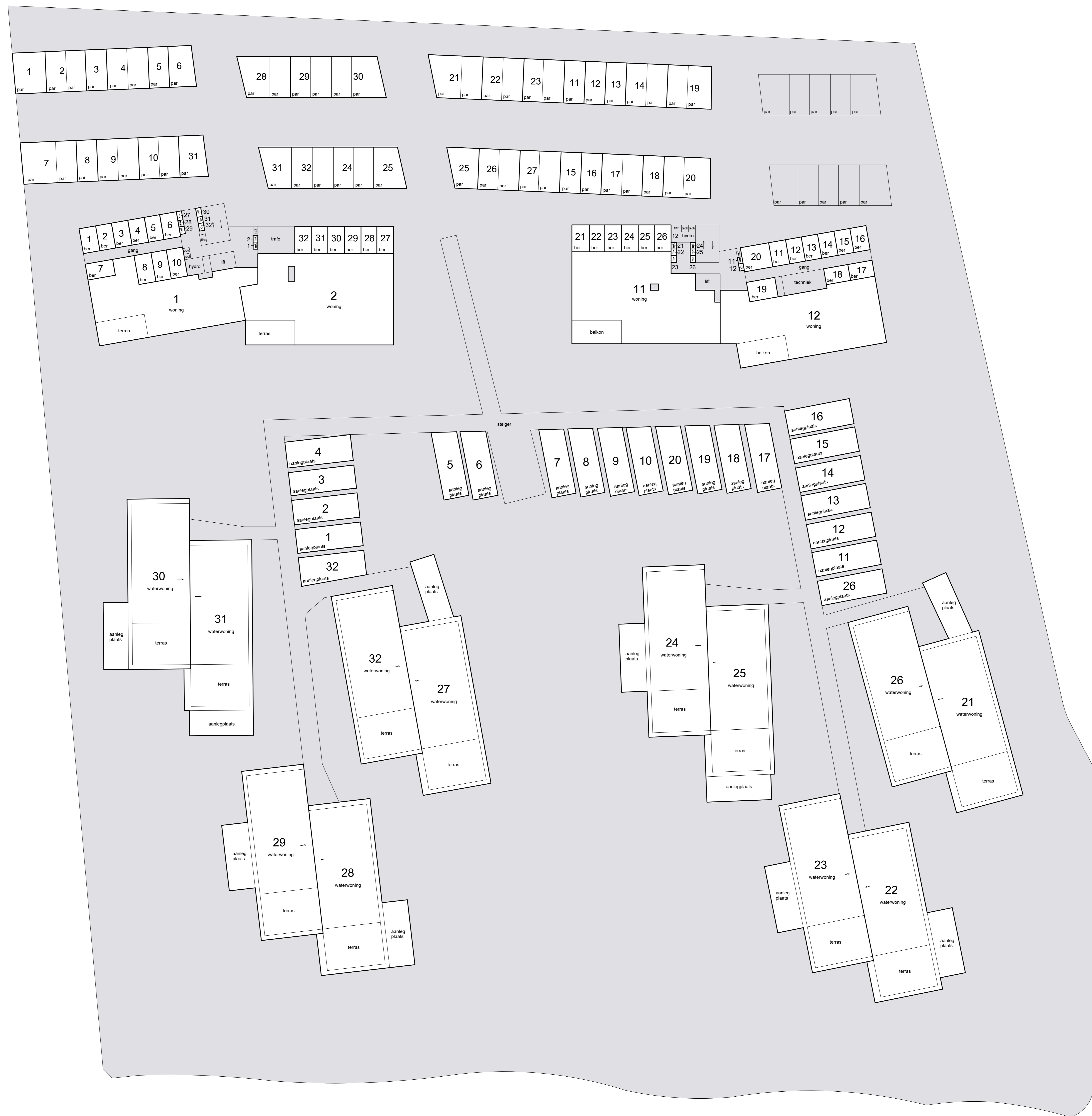


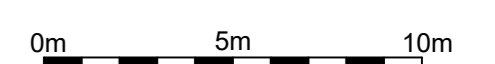
Schaal 1 : 200
= Gemeenschappelijk
Tekening bestaat uit 5 bladen
Blad 1

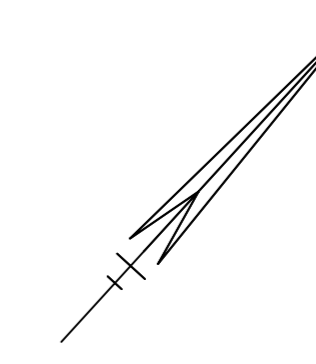


Situatie 1: 1000

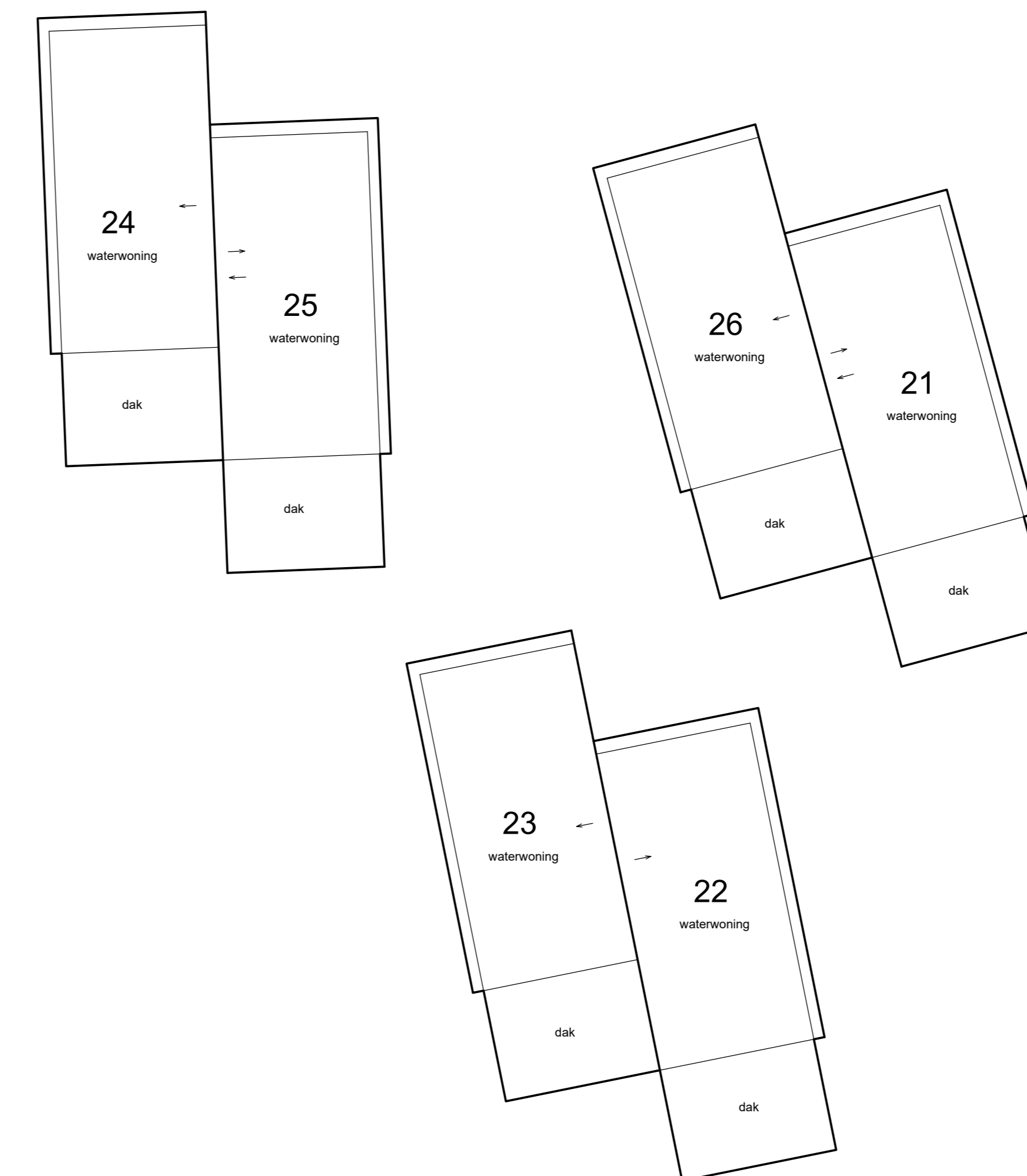
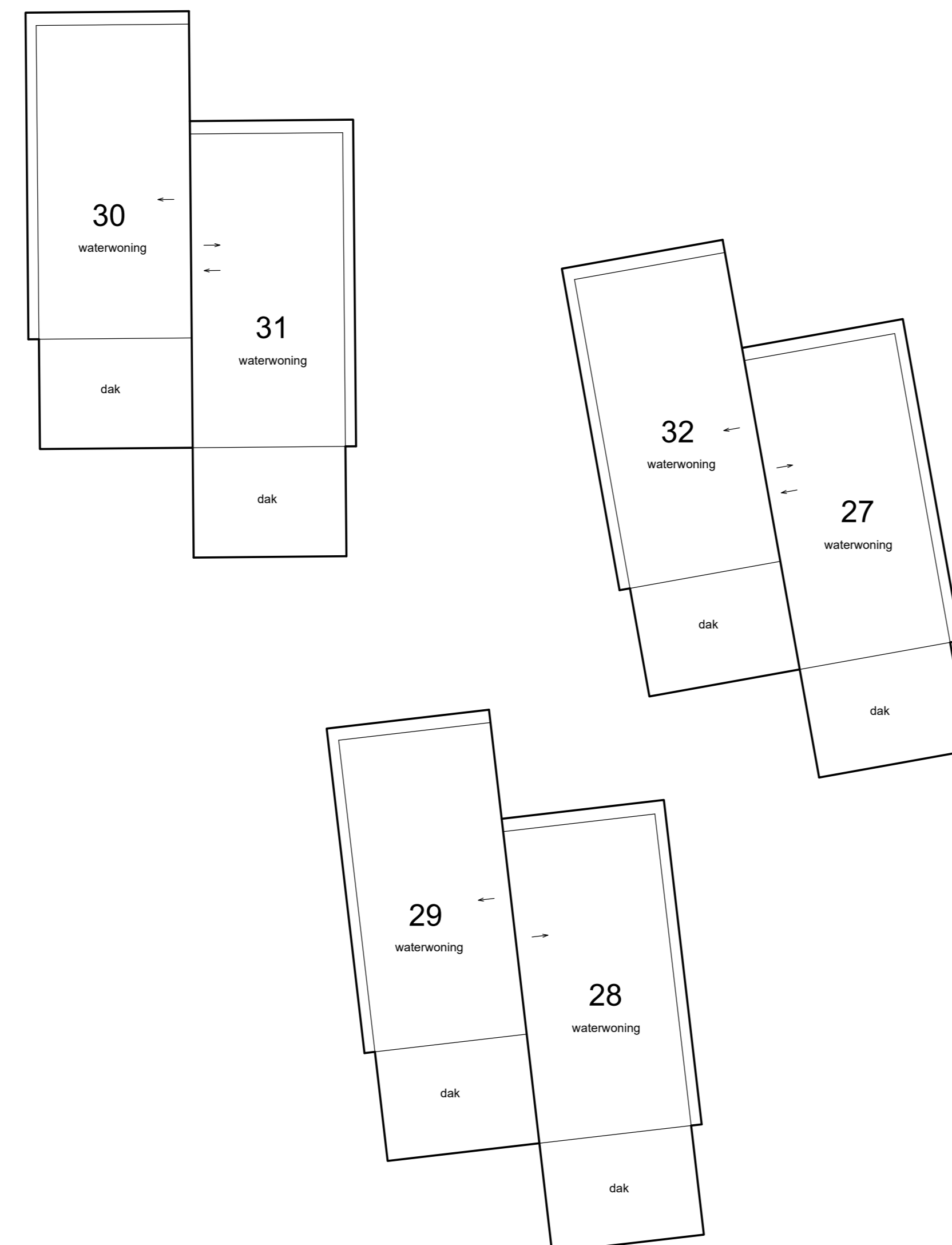
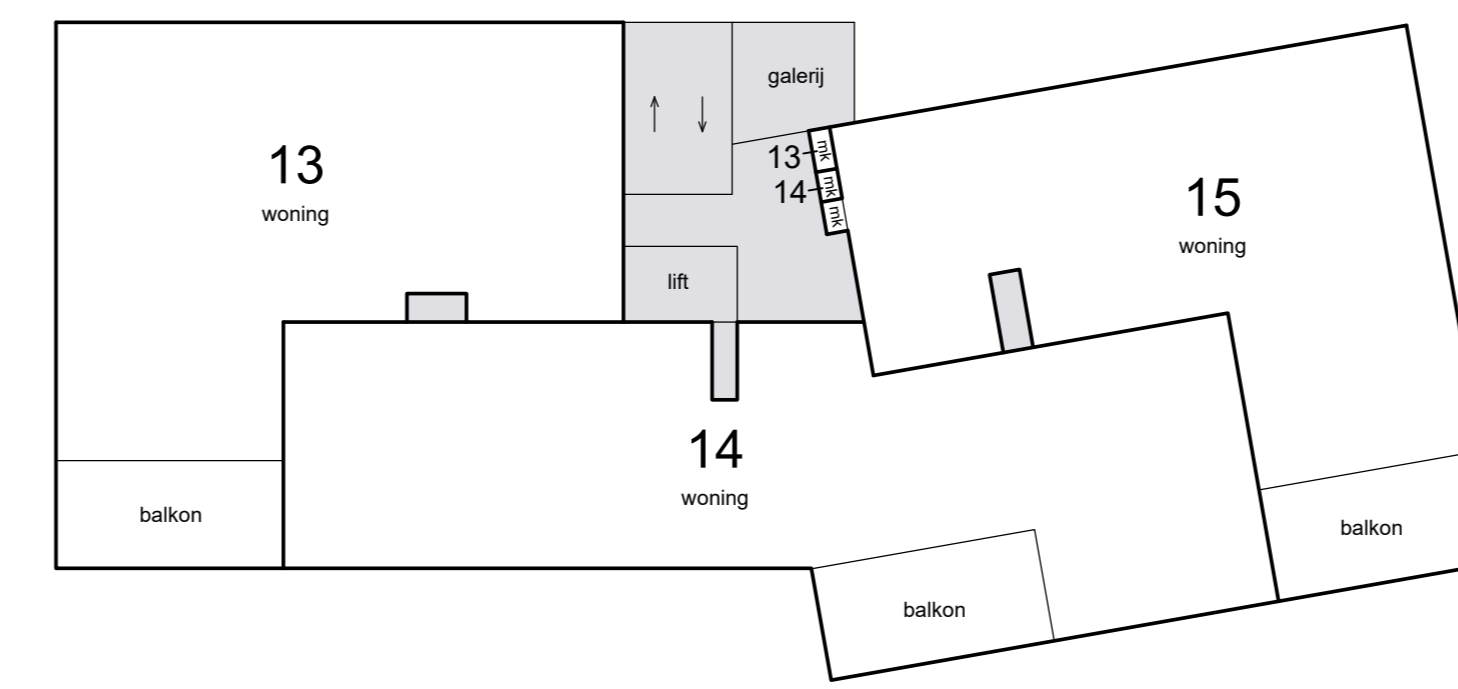


begane grond

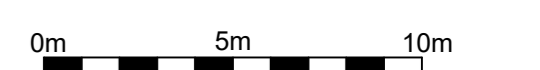


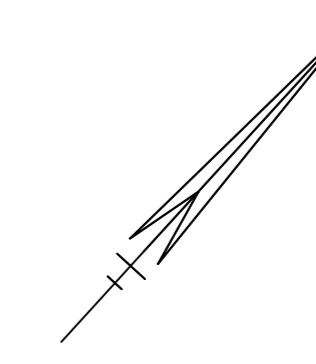


Schaal 1 : 200
= Gemeenschappelijk
Tekening bestaat uit 5 bladen
Blad 2

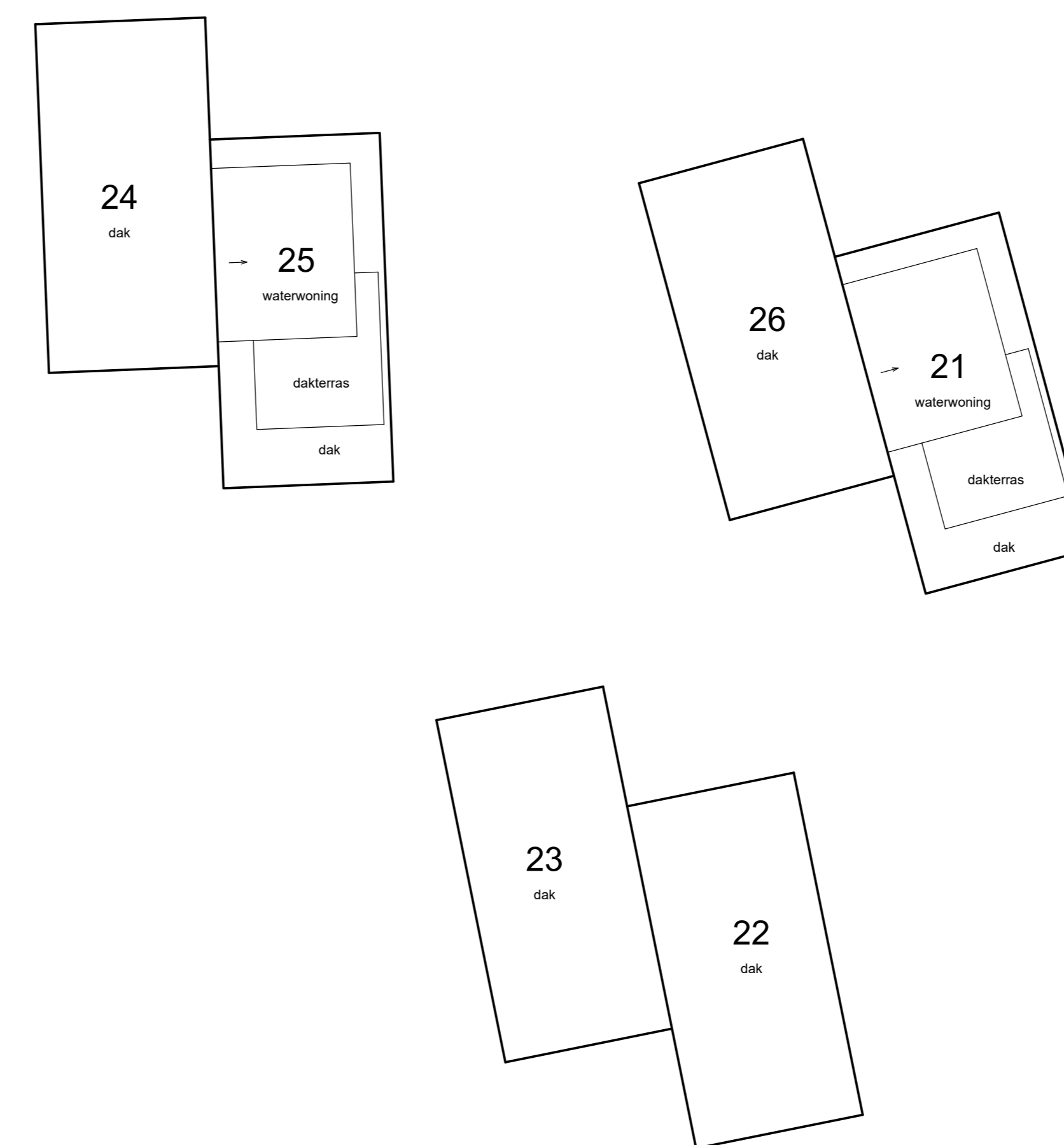
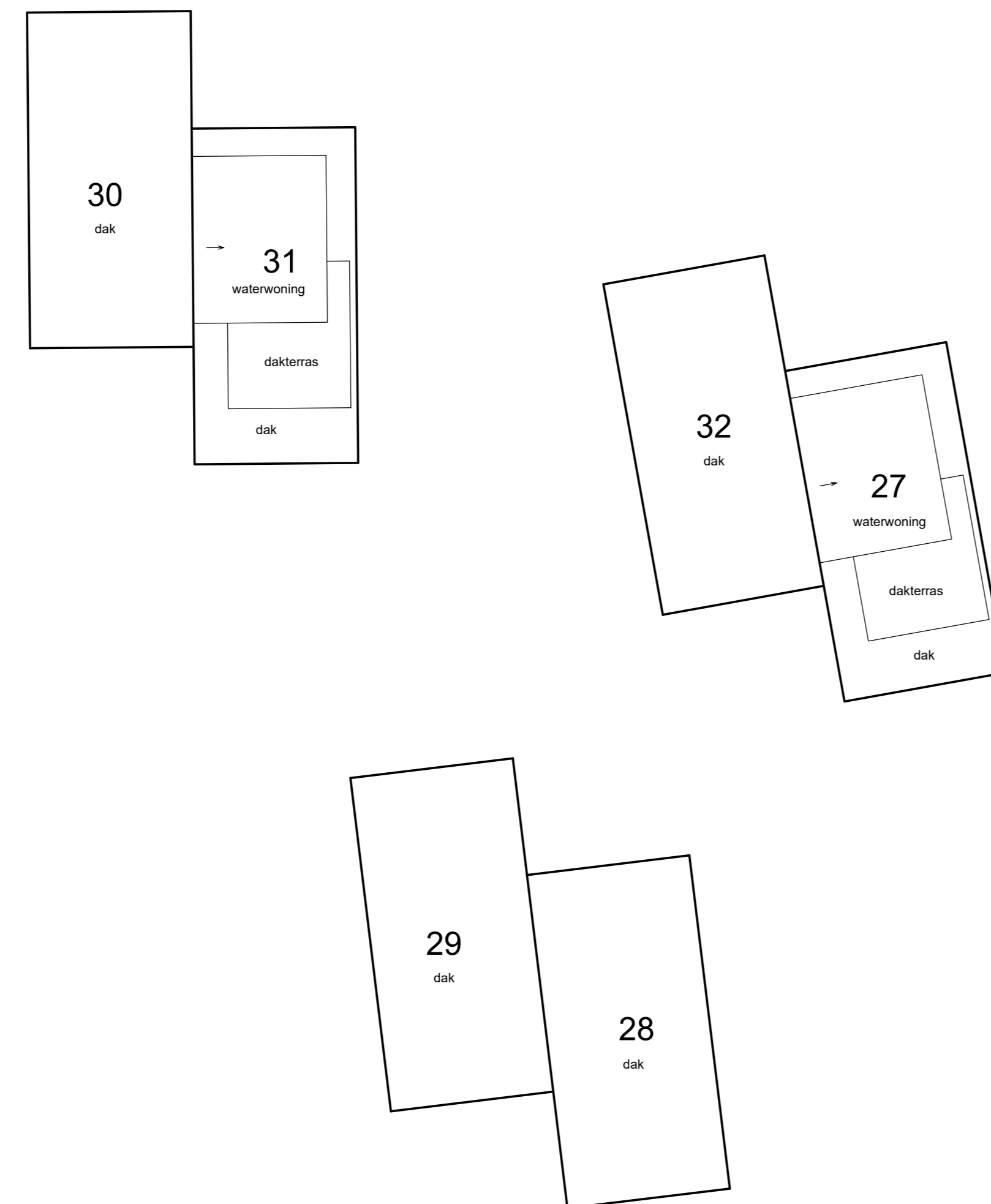
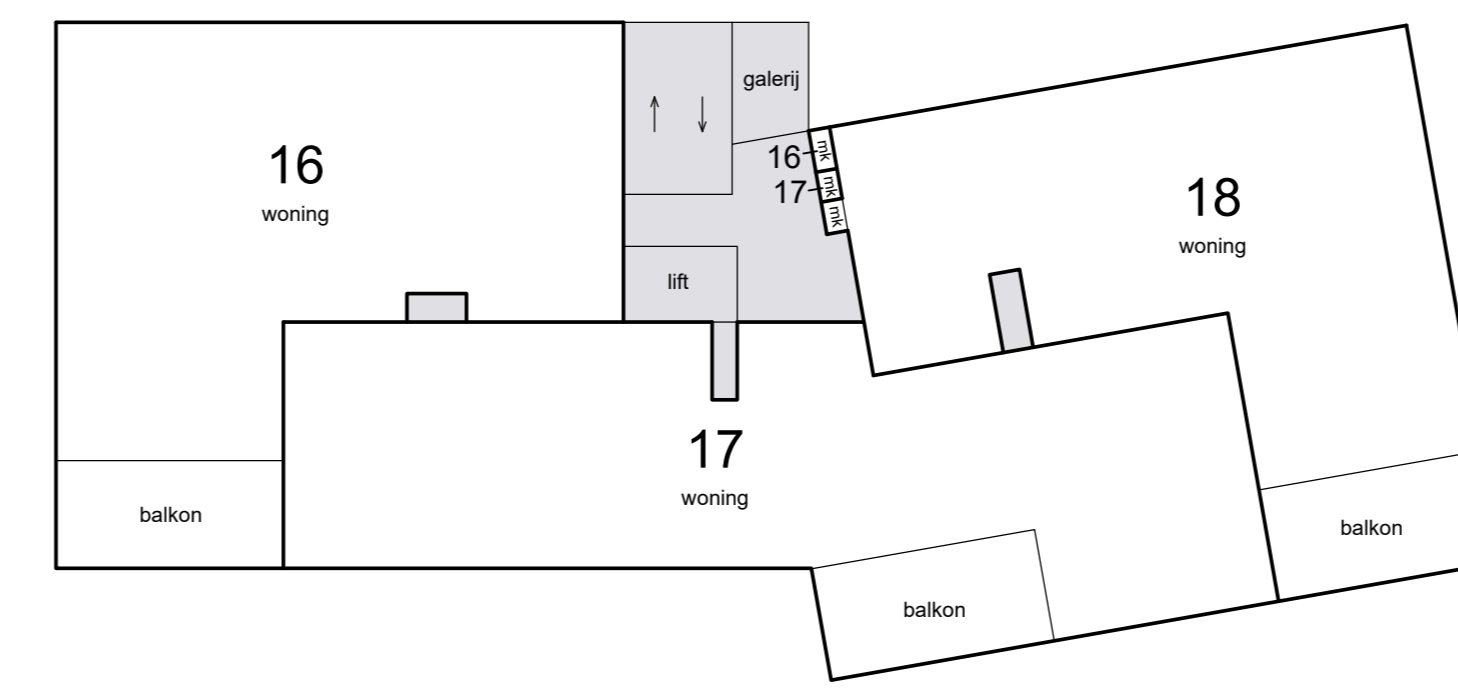
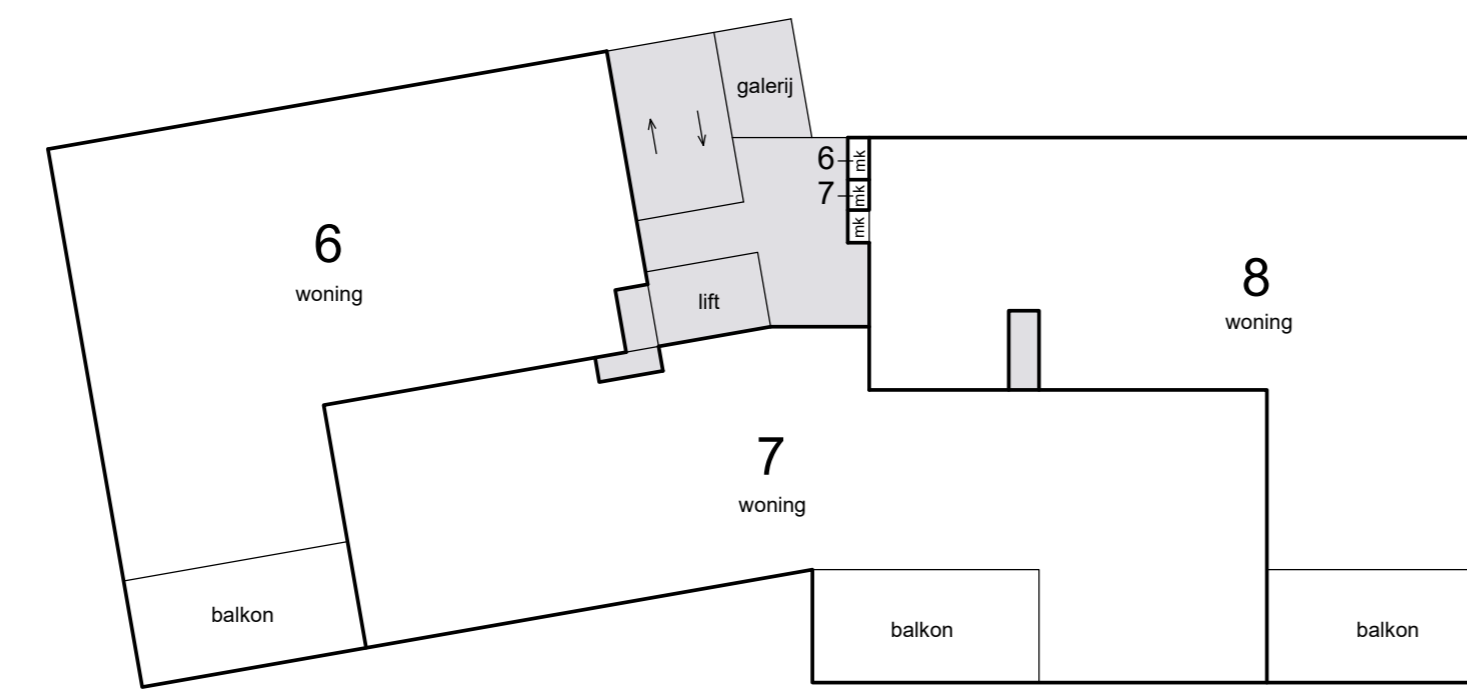


1e etage

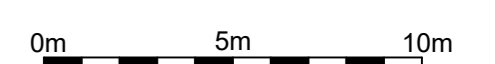


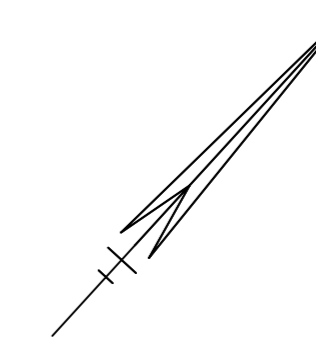


Schaal 1 : 200
= Gemeenschappelijk
Tekening bestaat uit 5 bladen
Blad 3

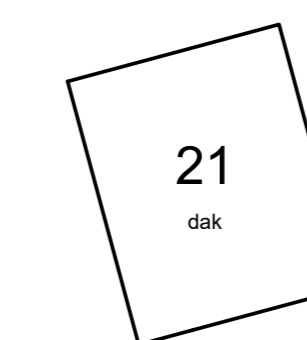
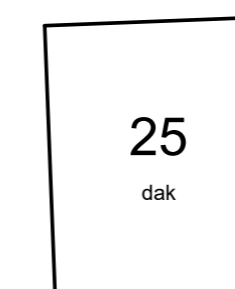
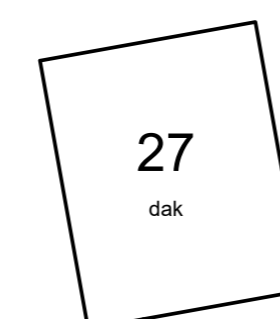
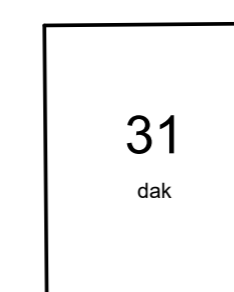
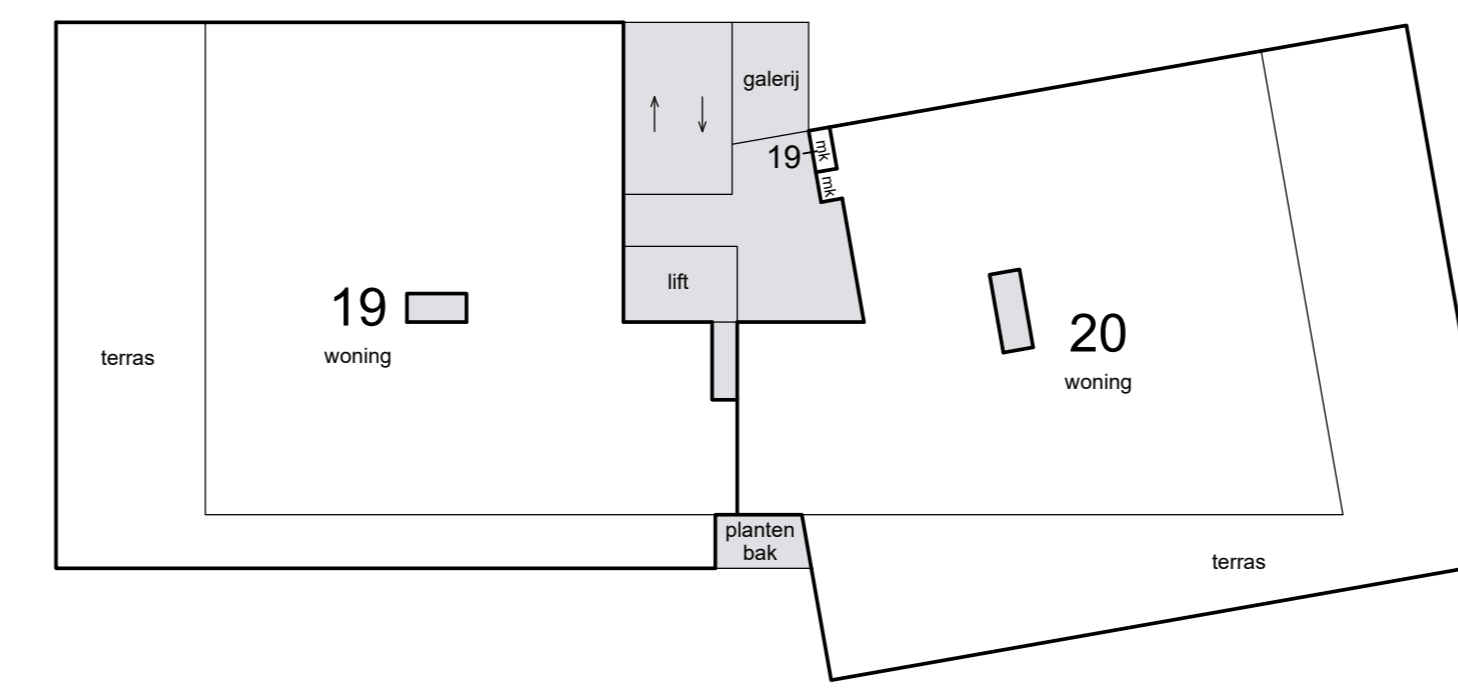
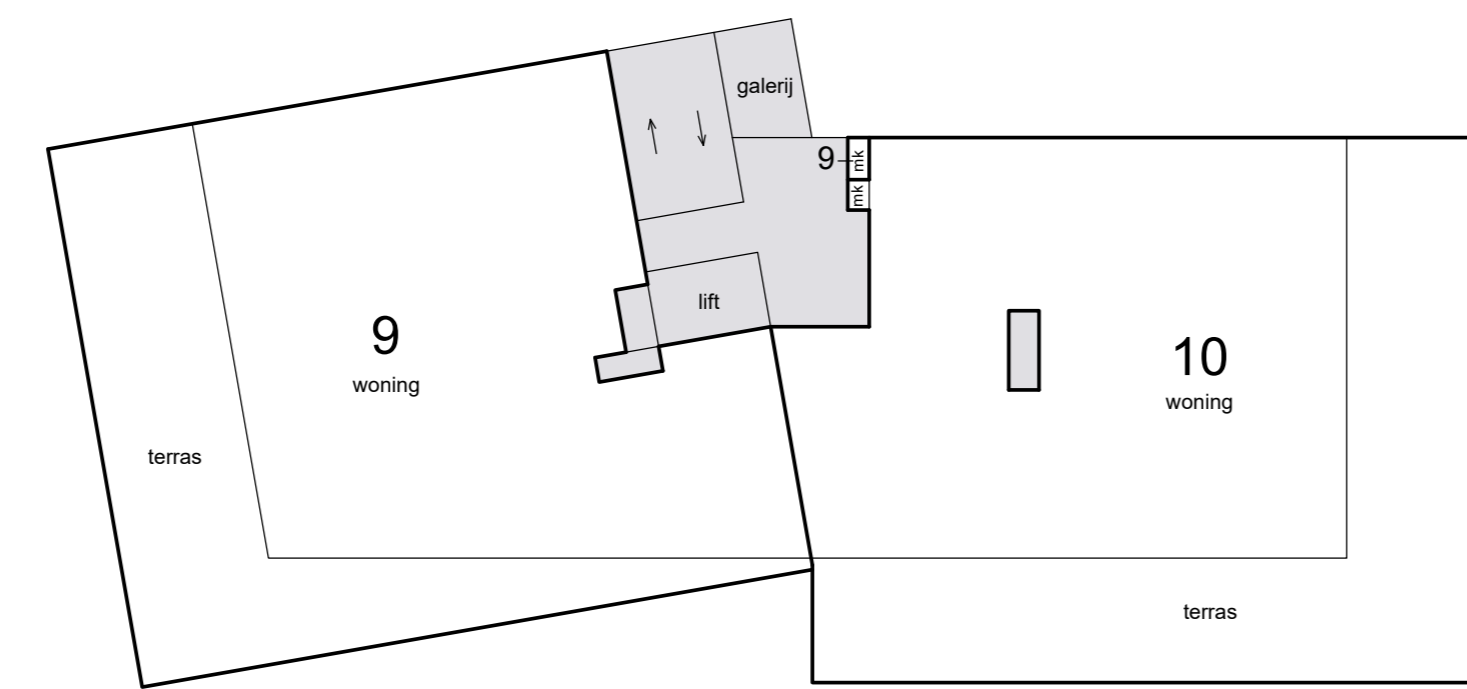


2e etage

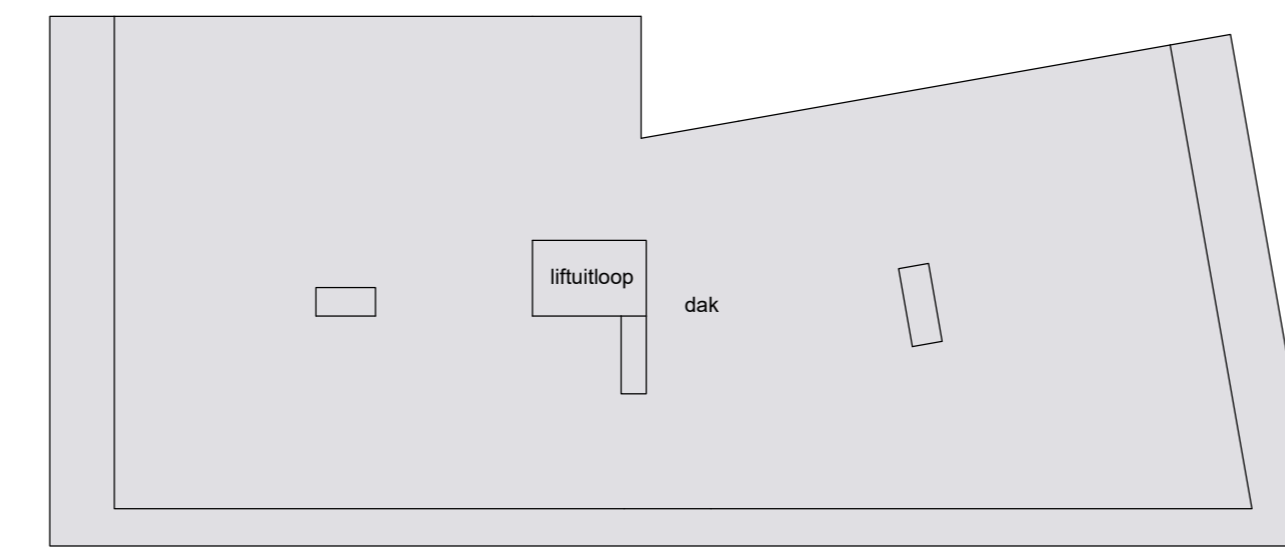
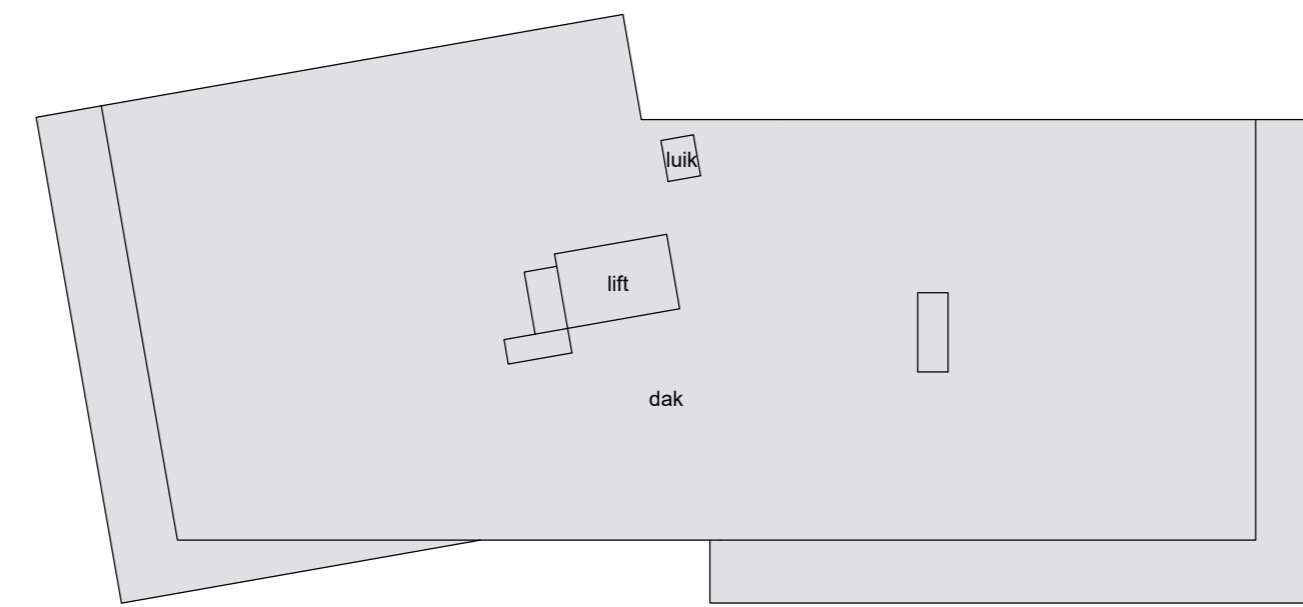
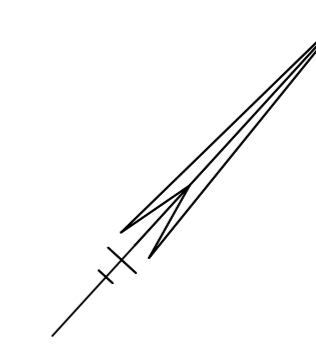




Schaal 1 : 200
= Gemeenschappelijk
Tekening bestaat uit 5 bladen
Blad 4



Schaal 1 : 200
= Gemeenschappelijk
Tekening bestaat uit 5 bladen
Blad 5



dak

